



Industrial Machinery and Components

CORPORATE PROFILE

2023





TRANSFORMING MATTER IS OUR VOCATION

Scm Group was established from the strategic vision of **SCM**, a company founded in 1952 with the mission of offering the widest range of solutions available in the woodworking sector.

Over time the Group has **developed technologies and taken over leading brands** to complete all the processes involved in secondary woodworking and then expanding to include composite materials, plastic, glass, metal and marble.



THE FIGURES OF A SOLID AND RELIABLE GROUP



850

Million/Euro
of consolidated
turnover



4,000+

people
in Italy
and abroad



3

main
industrial
centres



5

continents
with a direct
and capillary
presence



7%

of turnover
invested
in R&D



INDUSTRIAL MACHINERY

Stand alone machines, integrated systems and services dedicated to the machining process of a wide range of materials.



Woodworking technologies



Technologies for machining composites, aluminium, plastic, glass, stone and metal

INDUSTRIAL COMPONENTS

Technological components for machines and systems produced by the Group, third parties and the mechanics industry.



Electro-spindles and technological components



Electrical panels



Carpentry and mechanics processes

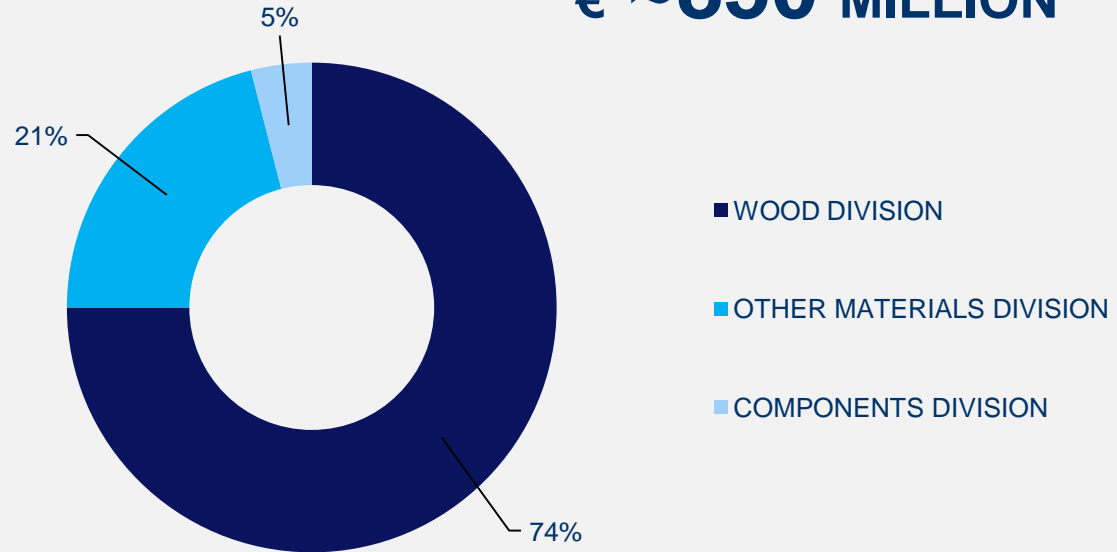


Iron castings

GROUP'S MAIN FIGURES

PEOPLE
4,274

TURNOVER
€ ~850 MILLION



PRELIMINARY DATA AS OF 01/27/2023, STILL IN PROGRESS AND NOT YET APPROVED BY THE BOARD.
DO NOT DISCLOSE OUTSIDE YOUR ORGANISATION



RELIABILITY

The security of a strong, reliable partner.

PEOPLE

Respect for people, their experience and their skills.

INTERNATIONALITY

A natural aptitude for global presence and multi-culturalism.

INNOVATION

Ground-breaking processes and products that generate value.

OUR VALUES

Scm Group is a solid family company with a long-term vision that **focuses on people**, also professional capabilities, quality of life and **caring for the local area**, not only the Group's original home, but in all the places it has expanded to over the years. The Group invests in talent in order to drive **innovation** that respects sustainable development.



People, with their distinctive characteristics,
at the heart of the company

Protecting the environment
to guarantee a future

Not a customer but a partner

There can be no business
without proper corporate ethics

CODE OF CONDUCT

Our way of seeing
the present and future,
starting with consolidated values

At the root of Scm Group's new Code of Conduct lies **fundamental principles** such as:

- honesty and transparency
- corporate social responsibility
- centrality of people and respect for their distinctive characteristics
- protecting health and safety in the workplace
- safeguarding and respecting the environment and areas where Scm Group works, all over the world

GLASS
TECHNOLOGY

WOOD
TECHNOLOGY

PLASTIC
TECHNOLOGY

**ADVANCED
MATERIALS**
TECHNOLOGY

STONE
TECHNOLOGY

METAL
TECHNOLOGY

ADVANCED TECHNOLOGIES FOR MACHINING MATERIALS

Today, Scm Group is a **world leader in machining technologies** for a wide range of materials.

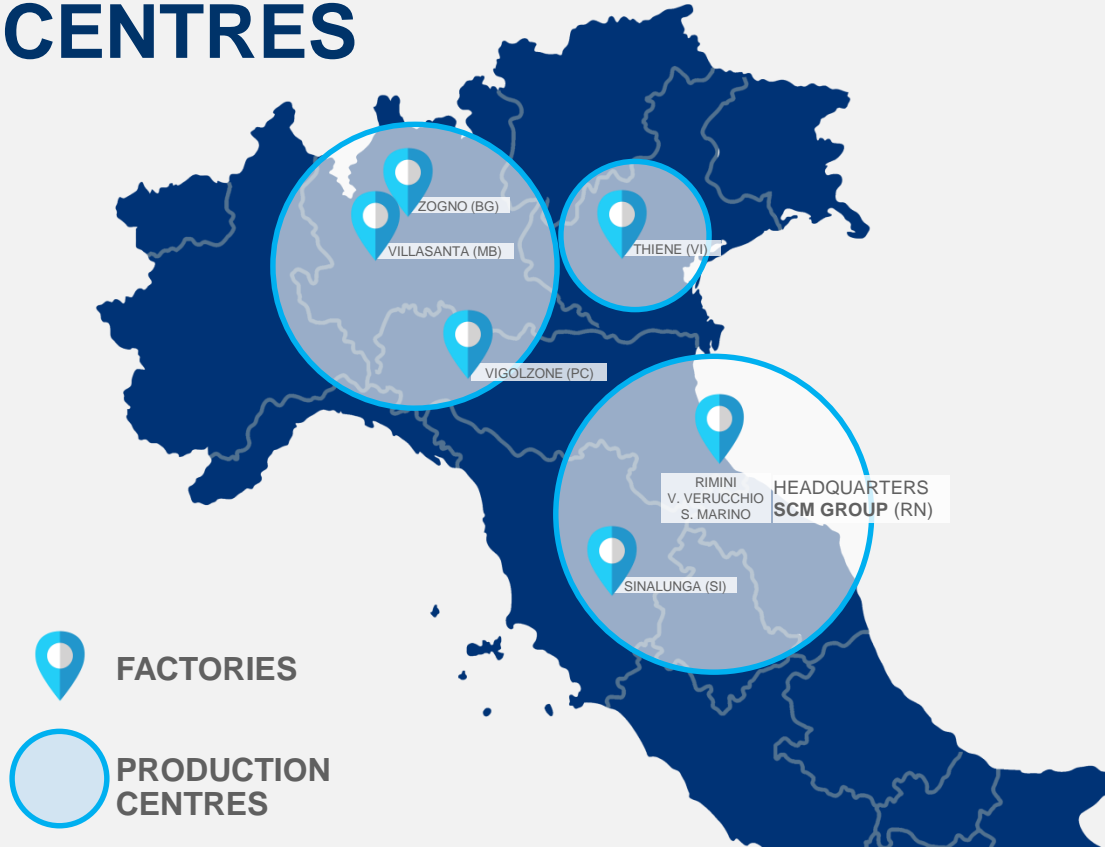
The companies in the Group have developed in-depth specialist skills in these sectors which have made them a reference point for all the most innovative and reliable technologies.



AT THE SERVICE OF LEADING COMPANIES IN A WIDE RANGE OF SECTORS

The companies in the Group are, throughout the world, a highly reliable partner for the main manufacturing companies in a wide range of product markets, from **furniture** to **construction**, **automotive** to **aerospace**, and **yachting** to **plastic processing**. All these have helped meet the challenges that have marked the technological progress of many sectors.

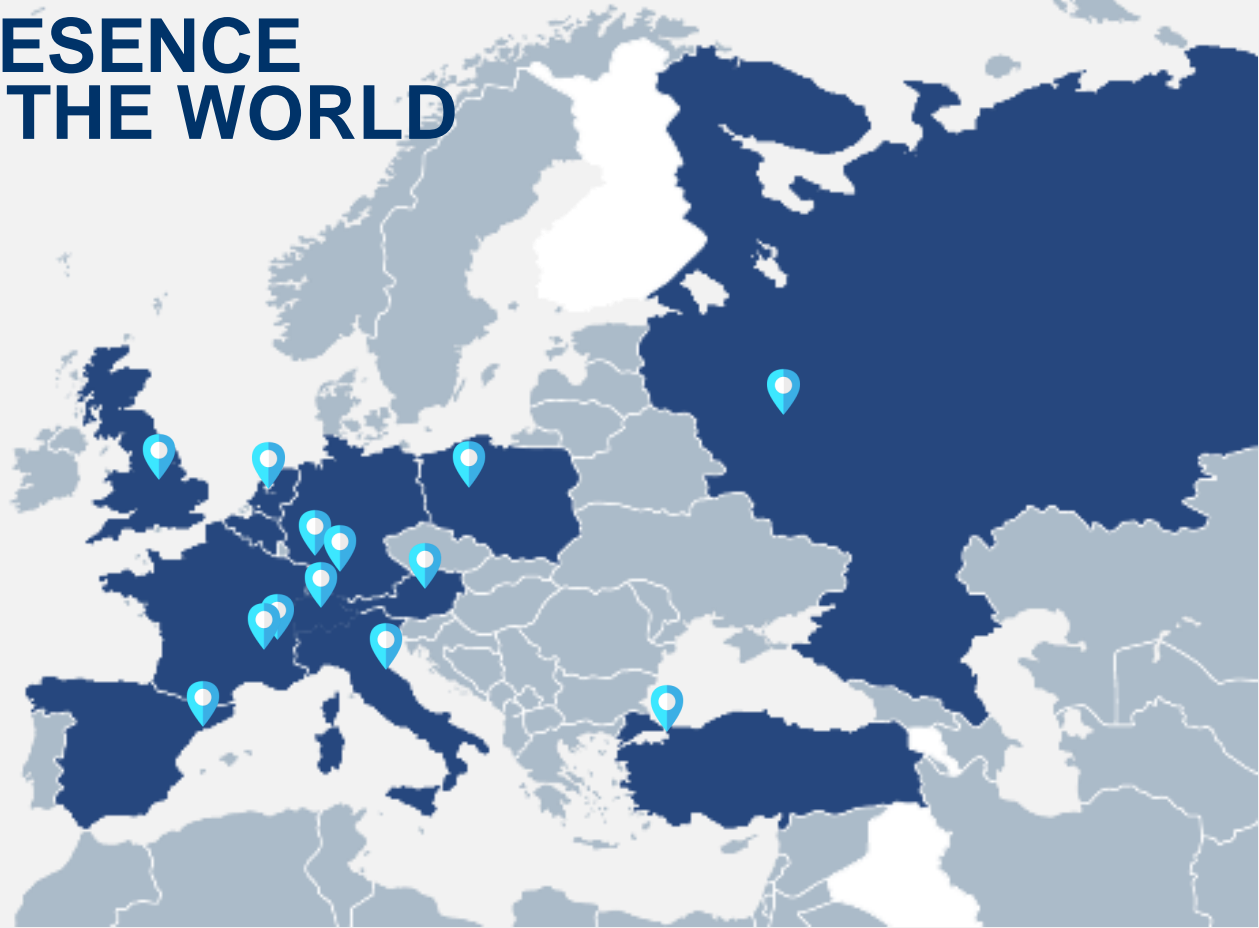
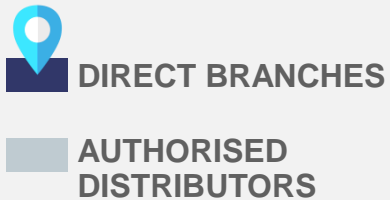
BRANCHES AND PRODUCTION CENTRES



CAPILLARY PRESENCE THROUGHOUT THE WORLD



CAPILLARY PRESENCE THROUGHOUT THE WORLD





A FIRM COMMITMENT TO PROFESSIONAL TRAINING

A longstanding tradition of projects whose main focus is to constantly improve the know-how of the Group's employees, thanks to the “**Campus Scm Group**” training center. “**E-Campus**”, an e-learning platform for an even smarter and more accessible training, from both inside and outside of the Group.

First-rate training activities for technicians, dealers and customers, with close attention to innovation, software and digital services.

scmgroup
Industrial Machinery and Components

scm
woodworking technology

Cms

HITECO

es

steelmec

scmfonderie

INDUSTRIAL MACHINERY

Stand alone machines, integrated systems and services dedicated to the machining process of a wide range of materials.



Woodworking technologies



Technologies for machining composites, aluminium, plastic, glass, stone and metal

INDUSTRIAL COMPONENTS

Technological components for machines and systems produced by the Group, third parties and the mechanics industry.

HITECO

Electro-spindles and technological components



Electrical panels



Carpentry and mechanical processes



Iron castings



**SOLID WOODWORKING
TECHNOLOGIES ARE
OUR DNA**





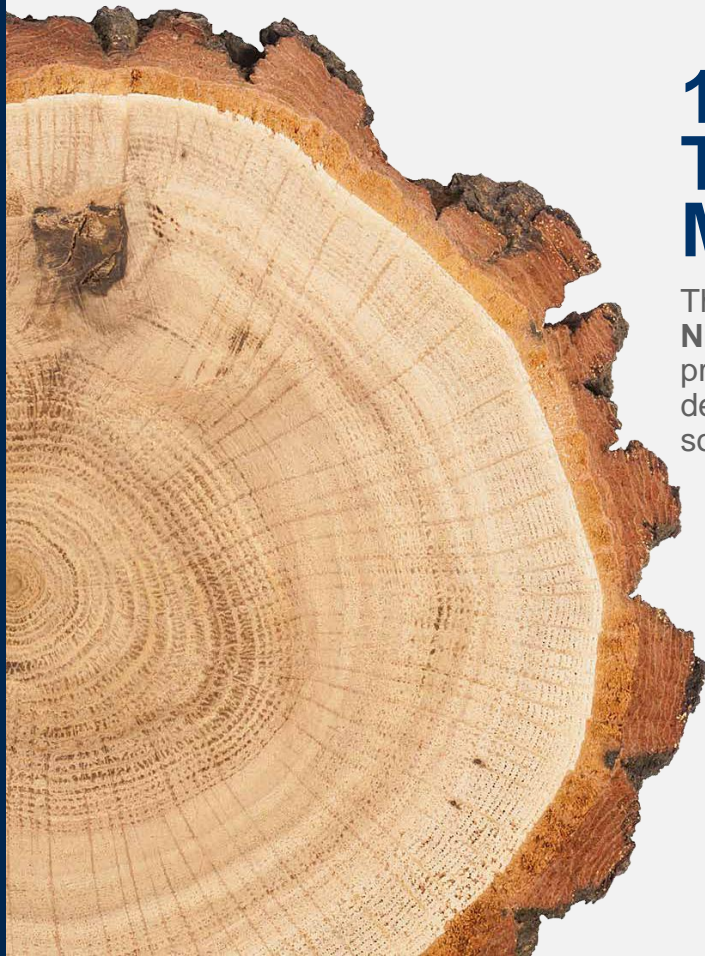
SINCE 1952 WE HAVE BEEN LEADERS IN THE MANUFACTURE OF MACHINES, SYSTEMS AND SERVICES FOR THE WOODWORKING INDUSTRY

SCM is the benchmark brand in the sector for woodworking machinery and the specialised technologies originating from its historic trademarks.

With an annual production of more than 20,000 machines SCM boasts the most important distribution network in the sector and an excellent after-sales service.

1952 THE FIRST WOODWORKING MACHINE IS PRODUCED

The history of SCM dates back to 1952 when **Nicola Gemmani and Lanfranco Aureli** produced their first woodworking machine, designed by **Giuseppe Gemmani**, Nicola's son, and called: **L'Invincibile**.





FOR OVER 65 YEARS, SCM HAS BEEN AT THE FOREFRONT OF THE INDUSTRIAL REVOLUTION IN THE WOODWORKING SECTOR

1952

1976 SCM develops the first **solid wood machining centres and door and window systems** and quickly takes on a leading role.

1985 SCM takes over **Morbidelli**, a move that is followed by the takeover of other prestigious companies such as **Stefani, Gabbiani, Dmc, Superfici** and others, until its **panel machining processes** are complete and it again takes on a leading role.

1992 SCM then takes over **Routech** and in the years that follow, it develops a series of technologies for **machining wooden elements for the construction industry**.

2009 The company launches its **industrial consolidation and development plan**. SCM reorganises, implementing Lean Manufacturing strategies in its entire production process to obtain the highest levels of quality and efficiency.

2017 SCM becomes the Group's reference brand for the woodworking sector.



AT THE SERVICE OF ALL SECTORS IN THE WOODWORKING INDUSTRY

SCM offers a wide range of machines to satisfy all the stages in secondary woodworking processing.

This ranges from domestic, office and contract furniture to the world of structural architecture, such as beams and partitions as well as finishings, such as joinery, floors and stairs and onto specialised sectors, like chairs and eyewear.

All over the world where there is woodworking, there is SCM.



LEAN PRODUCTION

Today SCM is an important industrial complex dedicated entirely to woodworking technologies in which the most advanced principles of *lean production* have been applied to guarantee the highest levels of quality control and significant savings in terms of time and costs.



A FIRM COMMITMENT TO PROFESSIONAL TRAINING

Decades of experience both in Italy and abroad
In recent years SCM has sponsored the renovation of no less than 11 training centres.
These include the **Federlegno Arredo school in Lentate sul Seveso for over 400 students** that will become the most important training institution of its kind in Italy when it opens this Autumn.



DIGITAL PRODUCTS AND SERVICES

Work simple. Work digital

SCM DIGITAL INTEGRATED WOODWORKING PROCESS

Integrated software system, digital and technological services of wood for maximum control of production process information.

SCM accompanies businesses working with wood throughout the entire process, integrating machines with digital software and service solutions, with a constant focus on improving performance to optimise company productivity.

The SCM integrated system is based on the continuous digital evolution of technologies for wood and designs a flow of simple, fully communicative stages to deal with any kind of production demand. The result is an integrated, advanced, dynamic and digitally connected process.

SCM's software solutions have been designed to integrate with the pre-existing software in the company, to optimise the use of the machine and the entire process.



SOFTWARE

DIGITAL SERVICES

1 PREPARATION

PREPARATION

The first stage involves preparing all the information, data and programs needed for production.

It is here that the **CAD/CAM software** to transform the drawings in machine programs or **simulation software** can drastically cut times and errors that exist in the process from the office to the machine.

2 PLANNING

SCHEDULE

The production schedule is controlled with specific software like the MES (Manufacturing Execution System) **Maestro easyFLOW** software. Furthermore, this is also the stage at which all the optimizations, from cutting to drilling, are carried out to minimize scraps, waste and reduce production times.

3 PRODUCTION

PRODUCTION

The intelligent factory consists of machines fitted with an HMI software that facilitates the interaction of the user with the machine. The **Maestro active** machine's interface, line supervision and system software make the user experience easier, and it becomes simpler and more intuitive.

4 MONITORING

MONITORING

Once production has been launched, the **Maestro connect** Digital Services IoT platform allows for production maintenance to be monitored in the machine even from mobile devices. The MES **Maestro easyFLOW** software also allows orders under production and the control of its completion and lead time to be monitored.

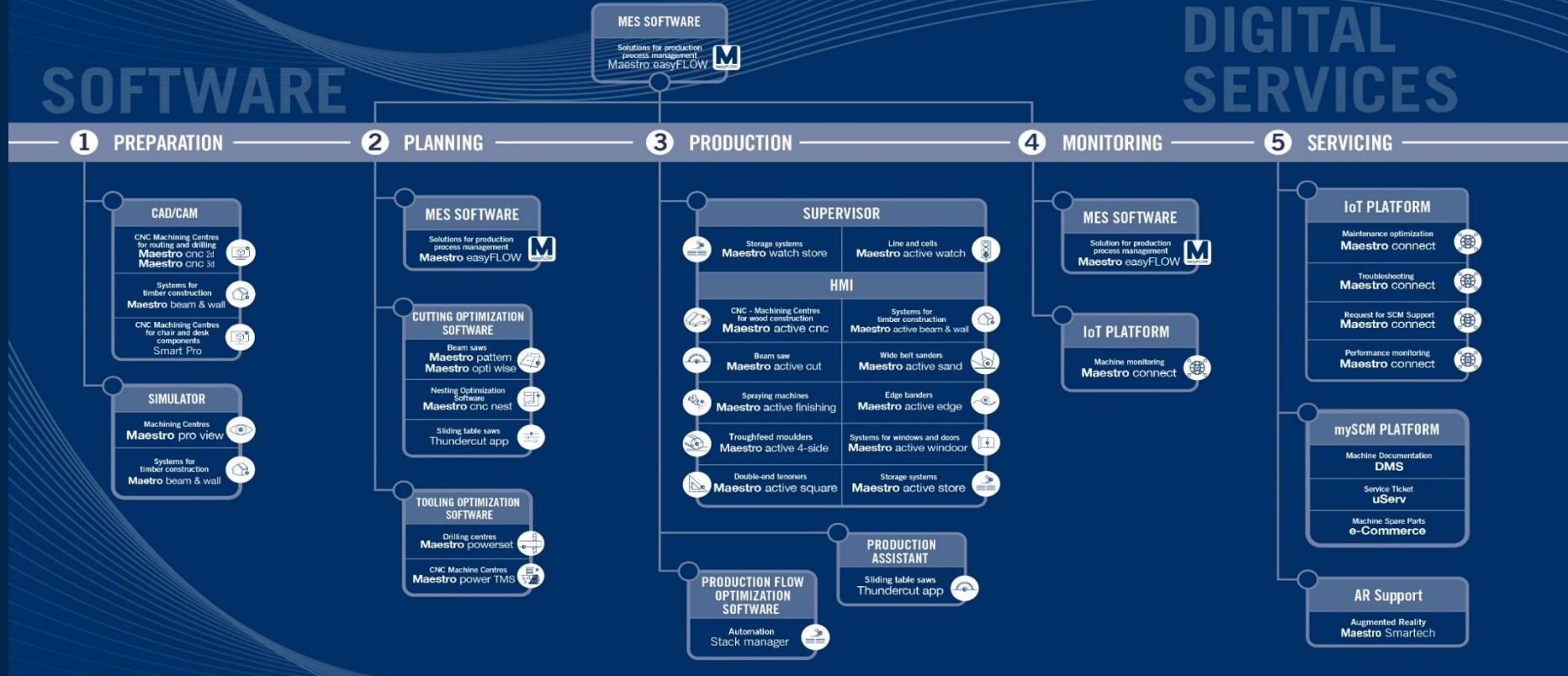
5 SERVICING

SERVICING

For the entire life cycle of the machine, the IoT platform of **Maestro connect** digital services, and the **mySCM** portal, guarantee monitoring, optimisation of machine maintenance, problem solving, support at the selection stage and when ordering spare parts, as well as augmented reality support with **Smartech** glasses.

SOFTWARE

DIGITAL SERVICES





SERVICE AND MAINTENANCE



TRAINING SERVICE



SPARE PARTS



DIGITAL SERVICES

scm | service

**WE'LL GO THE
EXTRA MILE
FOR YOU**



SERVICE AND MAINTENANCE

- Installation and startup
- Preventive maintenance programs
- Warranty extension into a second year
- Checks and alterations to machinery on site due to a change in production needs
- Updating obsolete products



SPARE PARTS

- List of recommended spare parts
- E-shop
- Interactive spare-parts catalogues
- Repairs on electronic parts, glue tanks and electro-spindles
- 36,000 different product codes
- Automatic storage



TRAINING SERVICE

- Courses for machine operators
- Software and programming courses
- Training in production start-up
- Maestro connect courses



DIGITAL SERVICES

In SCM we commit to guaranteeing state-of-the-art digital services and products in conjunction with the steady support of the best technicians. Alcuni dei nostri servizi digitali:

- **Maestro connect:** IoT technology that allows the machine's parameters of use and productivity to be constantly monitored and reduce down times
- **Maestro Smartech:** augmented reality device, for a direct connection to be established with the technicians and work hands free
- **myScm portal:** access point to all the services and tools that SCM makes available in a click.



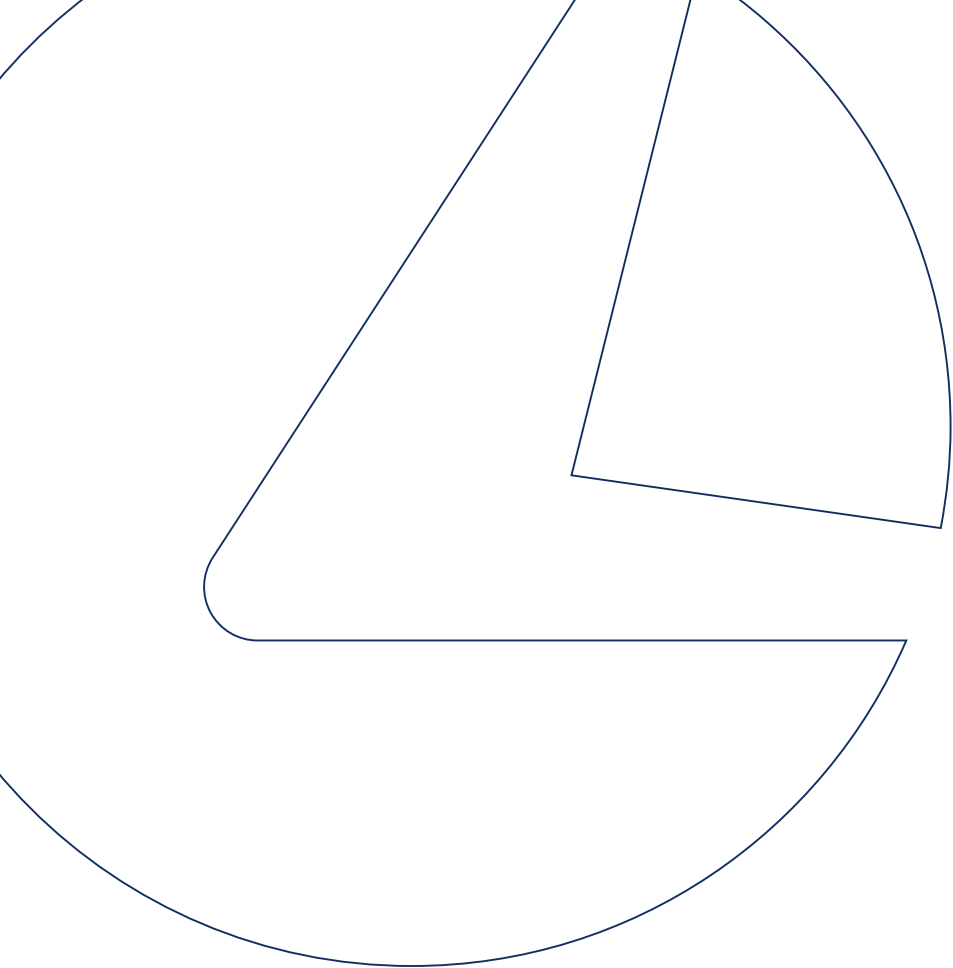
WE'LL GO THE EXTRA MILE FOR YOU



TECHNOLOGIES

A VAST HERITAGE OF SKILLS IN A SINGLE BRAND

| TECHNOLOGIES | ORIGINAL BRANDS |
|---|--------------------------------------|
| CNC MACHINING CENTRES | MORBIDELLI, SCM, ROUTECH, BALESTRINI |
| EDGE BANDERS AND SIZING EDGE BANDERS | STEFANI, SCM |
| BEAM SAWS | GABBIANI, SCM |
| DRILLING SOLUTIONS | MORBIDELLI, SCM |
| AUTOMATION SYSTEMS | MAHROS |
| SYSTEMS FOR TIMBER CONSTRUCTION | ROUTECH |
| THROUGHFEED MOULDERS | SCM |
| SYSTEMS FOR DOORS AND WINDOWS | SCM |
| MACHINES AND SYSTEMS FOR SQUARING, TENONING AND PROFILING | CELASCHI |
| WIDE BELT SANDERS | DMC, SCM |
| FINISHING SYSTEMS | SUPERFICI |
| PRESSES | SERGIANI |
| ASSEMBLY | CPC |
| PACKAGING | CPC |
| TENONERS, MORTISERS AND DOUBLE SIDED SHAPERS | BALESTRINI |
| JOINERY MACHINES | SCM, MINIMAX, FORMULA |
| INTEGRATED LINES AND SYSTEMS | |



**Thank you
for your kind
attention**